

VirtualDrive Pro 15

Contents

Chapter 1: Product Overview	3
1.1 Product Features	3
Chapter 2 Installation	3
2.1 System Requirements	3
2.2 Installing VirtualDrive Pro	4
2.3 Uninstalling VirtualDrive Pro	4
Chapter 3: Getting Started in VirtualDrive Pro	5
3.1 Launching VirtualDrive Pro	5
3.1.1 Create image from CD, DVD or Blu-ray	5
3.1.2 Advanced setting	7
3.2 VirtualDrive Pro Main Console	7
3.3 Creating new image	9
3.3.1 Create image from CD/DVD or Blue-ray	10
3.3.2 Building an Image from files or folders	10
3.3.3 Creating an image from project	12
3.3.4 Custom virtual CD	14
3.4 Burn image	15
3.4.1 Burn CD/DVD	15
3.4.2 Burn custom disc	17
3.4.3 Burn MP3 disc	18
3.4.4 Burn audio disc	18
3.4.5 Burn image from project	19
3.5 Cloning CD/DVD or BD	20
3.6 The VCD Manager	21
3.6.1 Using Virtual Drives in the VCD Manager	22
3.6.2 Using Physical Drives in the VCD Manager	2223
3.6.3 Adding VCDs to the VCD Manager	2223
3.6.4 Organizing VCDs in Cabinets	2324
3.6.5 Searching for VCDs	24
3.6.6 Extracting Files from a VCD	2425
3.6.7 Inserting a VCD into a Virtual Drive	2425
3.6.8 Ejecting a VCD from a Virtual Drive	2425
3.6.9 Importing and Exporting a VCD List	25
3.7 Converting VCDs and ISO 9660 Images	2526
Chapter 4: Technical Support and Product Updates	2526
Glossary	2627

Chapter 1: Product Overview

VirtualDrive has a unique burning capability that allows you to copy your CD/DVD/Blue-ray discs, games, and other programs to physical discs and Virtual CDs. Our software allows you to convert original discs into a Virtual CD (VCD), which plays in any one of up to 23 VCD drives. VirtualDrive Pro provides a quick and responsive playback without leaving any wear or tear on your disc drive. Furthermore, VirtualDrive Pro enables you to run games and applications at 200X without the physical disc loaded in a CD/DVD and BD drive.

1.1 Product Features

- **CD/DVD and BD**

VirtualDrive supports the following CD/DVD formats: CD-ROM, CD Extra, CD Text, audio CD, mixed-mode CD, photo CD, video CD, DVD-ROM, multi-session CD, and unprotected DVDs. Also, VirtualDrive now supports BD format!

- **Full Windows Integration**

The user interface is integrated with a context menu in Windows Explorer, so that you can insert, eject, and browse your VCDs in a familiar environment.

- **VCD Cabinet**

Sort your VCDs in your VCD library and place them in different “cabinets,” or categories which can help you locate various files.

- **Image Compression**

VirtualDrive Pro uses a high-performance compression engine when building VCDs. Compressed VCDs are automatically decompressed when accessed.

- **Optimized Disc Performance**

Play VCDs directly on your hard drive with access rates that are approximately 200 times faster than a CD-ROM drive.

Chapter 2 Installation

2.1 System Requirements

- Windows 2000, XP (including 64-bit system), Server 2003 (including 64-bit system), Server 2008 (including

64-bit system), Server 2012 (including 64-bit system), Vista (32-bit system and 64-bit system), Windows 7 (including 64-bit system), or Windows 8 (including 64-bit system),

- CD/DVD/BD drive or recorder
- 512 MB RAM
- 70 MB of hard drive space
- Intel Pentium (or compatible) 233MHz processor or better

2.2 Installing VirtualDrive Pro

1. Close any running applications.
2. Click on the VirtualDrive Pro executable file (setup).
3. If you accept the terms of the license agreement, select **I Accept the License Agreement** and click **Next**.
4. Enter your Name, Organization (optional), and serial number. Click **Next**. You can also install the trial version without entering the serial number.
5. The installation wizard will recommend a default folder for VirtualDrive Pro program files. If you would like to store program files in another location, select **Change** to open the file browser and designate a new folder.
6. Confirm the setup configuration and click **Next**.
7. Select the appropriate checkbox to place a program shortcut on your desktop.
8. Select Finish. You do not need to reboot your computer before you launch VirtualDrive Pro.

2.3 Uninstalling VirtualDrive Pro

1. Close all other running programs. If the VirtualDrive Pro icon is displayed in the System Tray, right click on the icon and select **Exit** to close VirtualDrive Pro.
2. To launch the VirtualDrive Pro uninstall wizard:
 - a. In the Windows taskbar, select **Start → All Programs → VirtualDrive Pro → Uninstall VirtualDrive Pro**.
 - Or:
 - b. Select **Start → Control Panel** and double click the **Add or Remove Programs** icon to open the **Add or Remove Programs** screen. Select **VirtualDrive Pro** from the list, and then select **Add/Remove**.
 - c. Select the Administrating Console or the Client Module, and click “Remove” to begin uninstalling the associated component. The deactivation dialog box will pop up. Click **Yes** to uninstall the product.

The uninstall program will remove all files created by VirtualDrive Pro, except image files (VCDs with the “VCD” or “D00...” extension), project files (“CIF” extension) and some log files that keep a record of the VCD list in your VCD library. These files are located in the VirtualDrive Pro install path and can be accessed or deleted in Windows Explorer.



Note

You can select the checkbox to delete the VCD List or VCD files in the VCD Cabinets while uninstalling VirtualDrive Pro. However, **the VCD files you delete will never be restored unless you have backed them up. We recommend you back up your VCD files before deleting.**

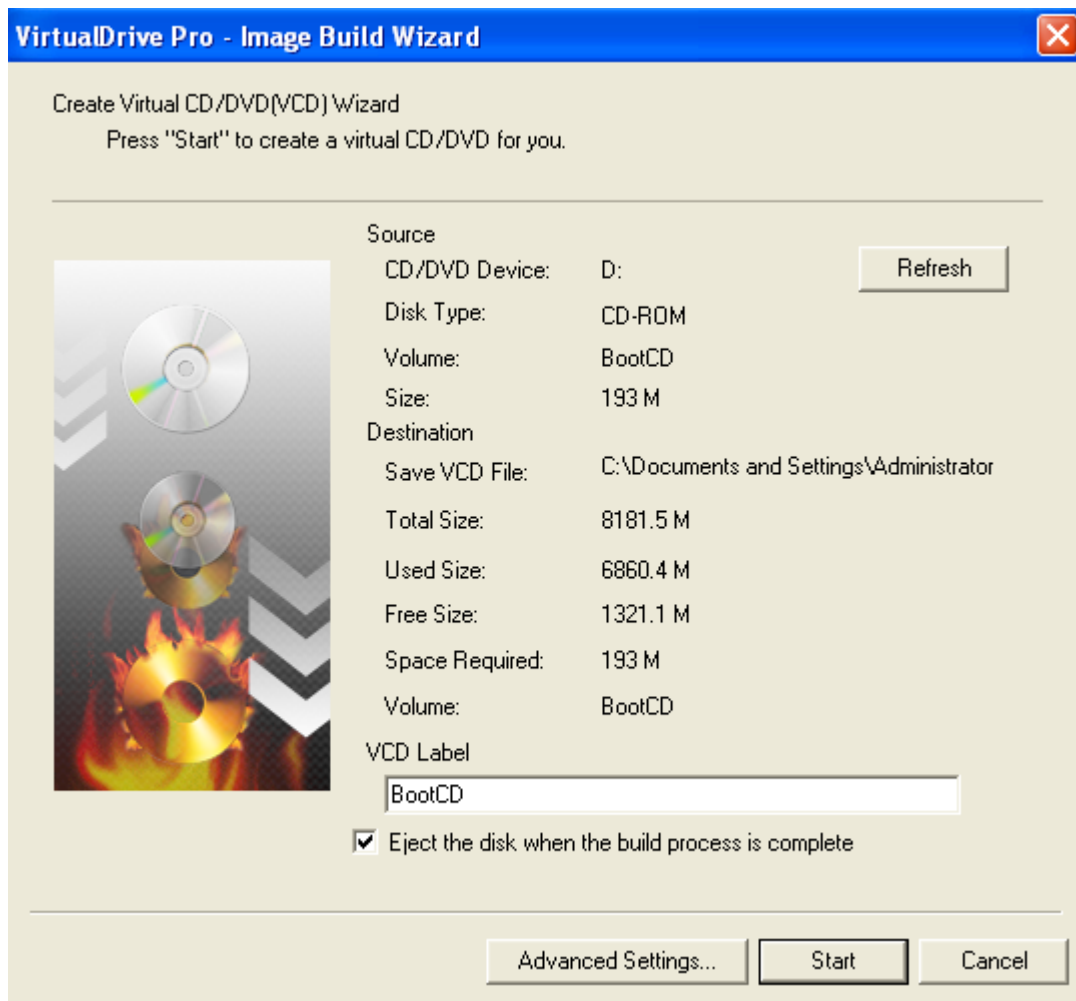
Chapter 3: Getting Started in VirtualDrive Pro

3.1 Launching VirtualDrive Pro

To launch VirtualDrive Pro, double click the program icon  on the desktop, or select **Start → All Programs → VirtualDrive Pro → VirtualDrive Pro Manager**.

3.1.1 Create image from CD, DVD or Blu-ray

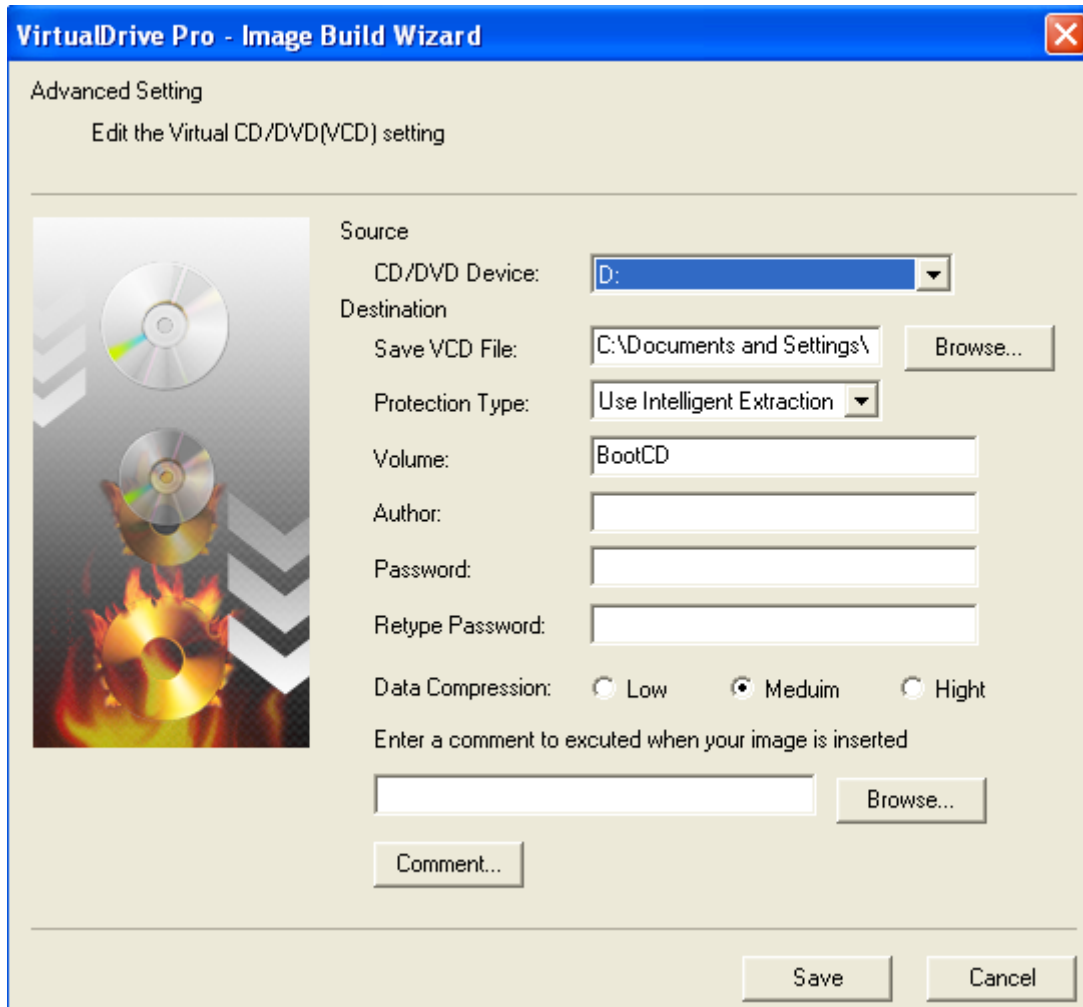
After launching, you will first see a pop up box to create a Virtual CD/DVD and BD from a physical disc.



Insert a CD into your hard drive to create a virtual CD. Follow the steps. If you do not need to create an image from CD/DVD/BD, please choose “**Cancel**”.

1. Insert the CD/DVD/BD into drive.
2. Click “**Refresh**”. Details of source CD/DVD/BD and the default setting for the file destination will appear in the box.
- 3 Click “**Start**”. Create a virtual CD image.
- 4 You may change the default settings for your target image by clicking **Advanced setting**.

3.1.2 Advanced setting



Protection Type: select a known protection type from the dropdown list. Intelligent extraction is the recommended choice for you to protect your image.

Author: Enter the name of the CD's publisher or author (i.e., FarStone Technology).

Password: set a password for VCDs which will be required when accessing the VCD

Data compression: save hard drive space; however, the "low" to "high" options will shorten or prolong the time it takes to build a VCD.

Comments: the comments are the descriptions of the image.

Once Advanced setting is complete, click "save". Start creating the virtual CD/DVD.

3.2 VirtualDrive Pro Main Console

The main console directly lists the functions of programs. You may click the buttons to complete your tasks. Above the Main Console are buttons to the following program components:

1 Create (new image)

In this option, you can perform the following functions:

Create a virtual CD from CD/DVD and Blu-ray

Create a virtual CD from files and folders

Create a virtual CD from a project

2 Burn(image)

In this option, you can perform the functions as follows:

Burn a CD/DVD from a virtual CD

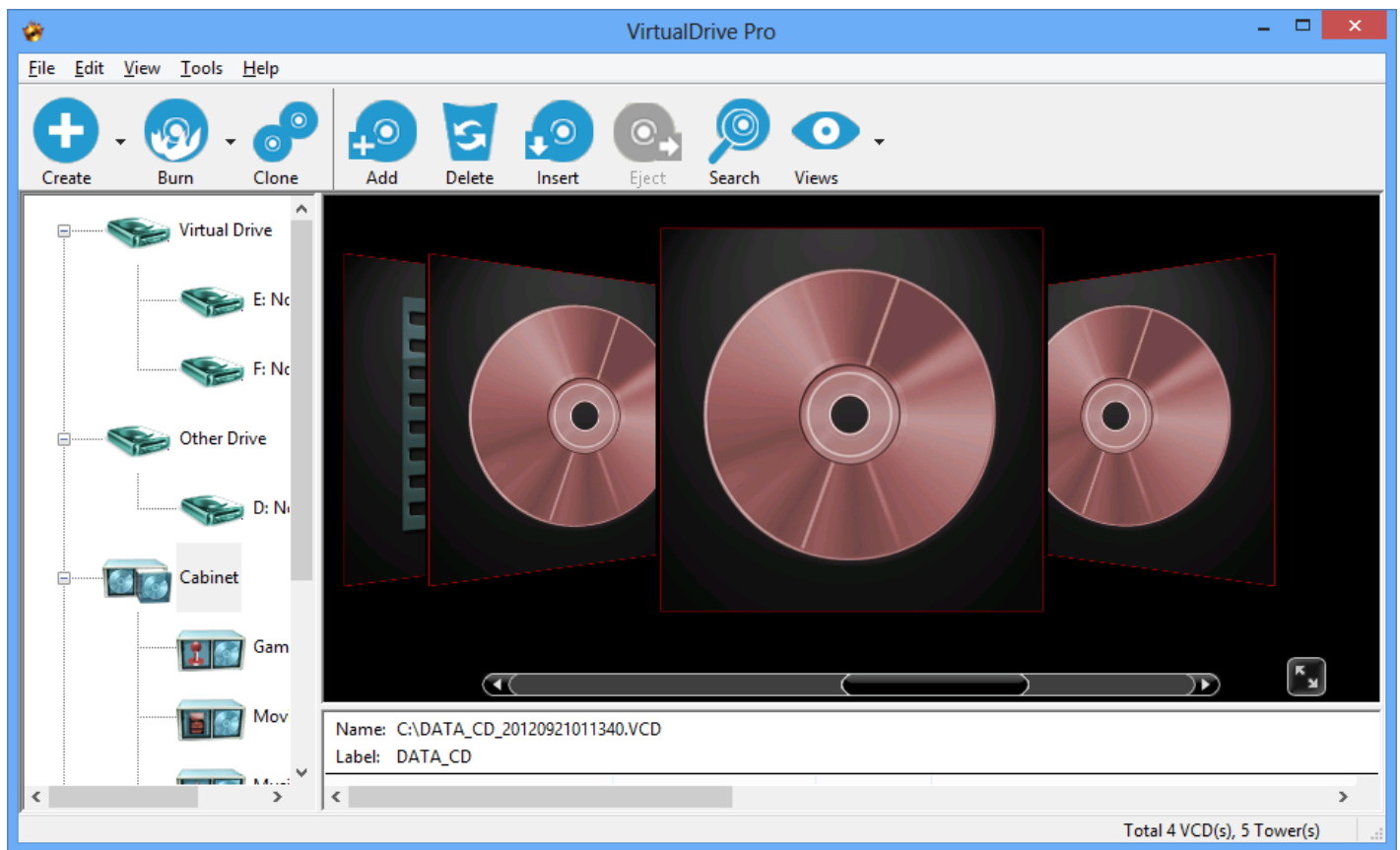
Burn a custom disc

Burn an MP3 disc

Burn an Audio disc

Burn a CD/DVD from a project

3 Clone



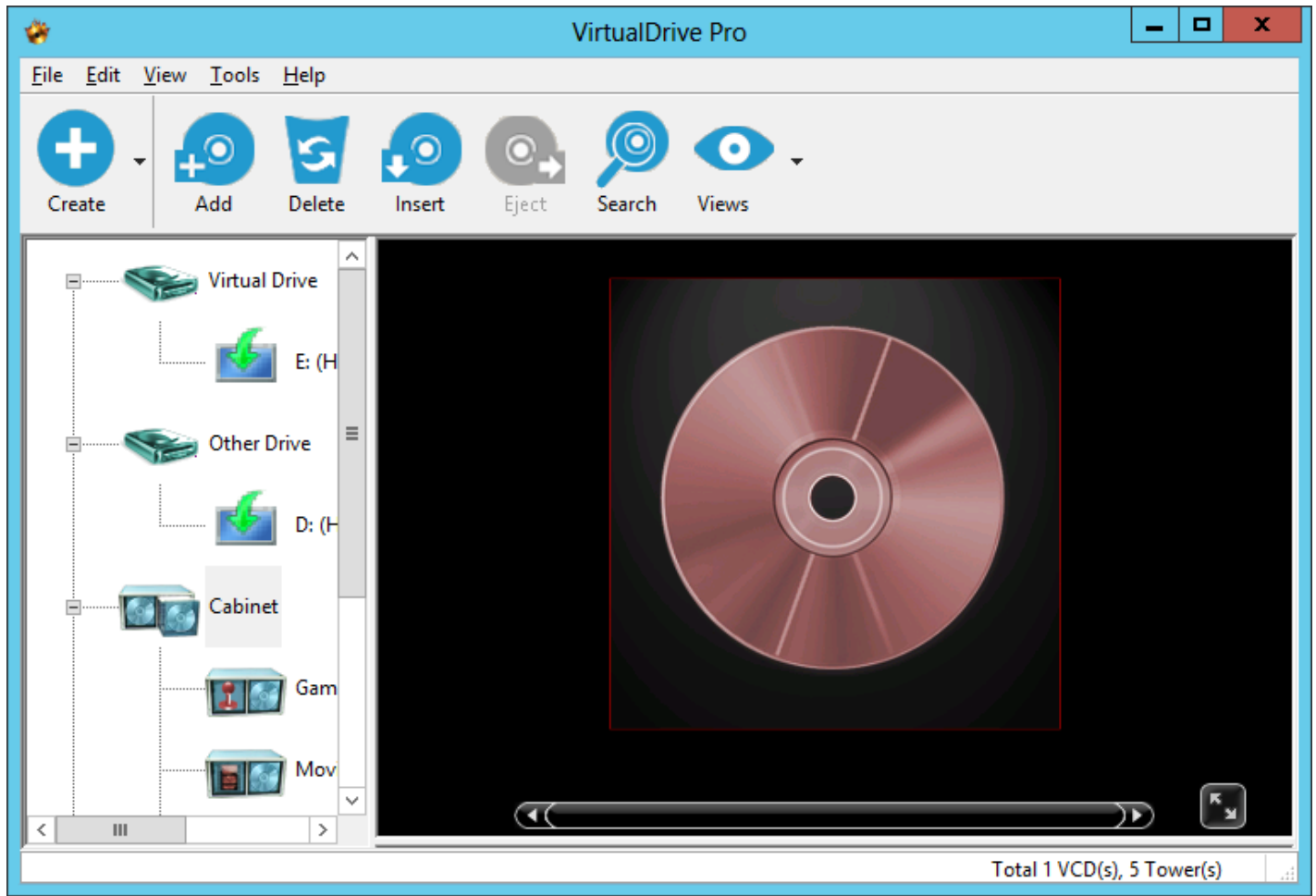
Besides the three main components in the console, other commonly used functions are also listed in the console as follows:

- **Add:** add the VCD files to the subcabinet and category based on your favorites.
- **Delete:** delete the VCD files in the cabinets
- **Insert:** Select an image from your VCD library to insert into a virtual drive.
- **Eject:** Click to eject a VCD from a virtual drive.

- **View:** Like windows view feature, it displays CDs and cabinets on screen through variety of ways(e.g. icon, cover view and details).

Tip

If the drive in your computer can't record, clone or burn the data directly to the physical CD/DVD, the "burn" and "clone" features in the main console will be hidden as following interface:



3.3 Creating new image

A virtual CD or VCD (.VCD extension) is an image file created from a physical disc. VirtualDrive Pro lets you build VCDs from the following disc types:

- CD-ROM
- DVD-ROM
- Blue-ray
- Mixed-mode CD
- Video CD

- Unprotected (non-CSS) video DVD
- CD Extra
- CD-Cops
- Audio CD
- Photo CD
- Multi-Session CD
- CD-Text
- UDF CD
- Data BD

VirtualDrive Pro supports many (but not all) DVD-ROM games, encyclopedias, multimedia content, and other large file formats.

3.3.1 Create image from CD/DVD or Blue-ray

You must first insert your prepared physical CD into the drive to make the virtual image. (The details refer to [3.1.1](#))

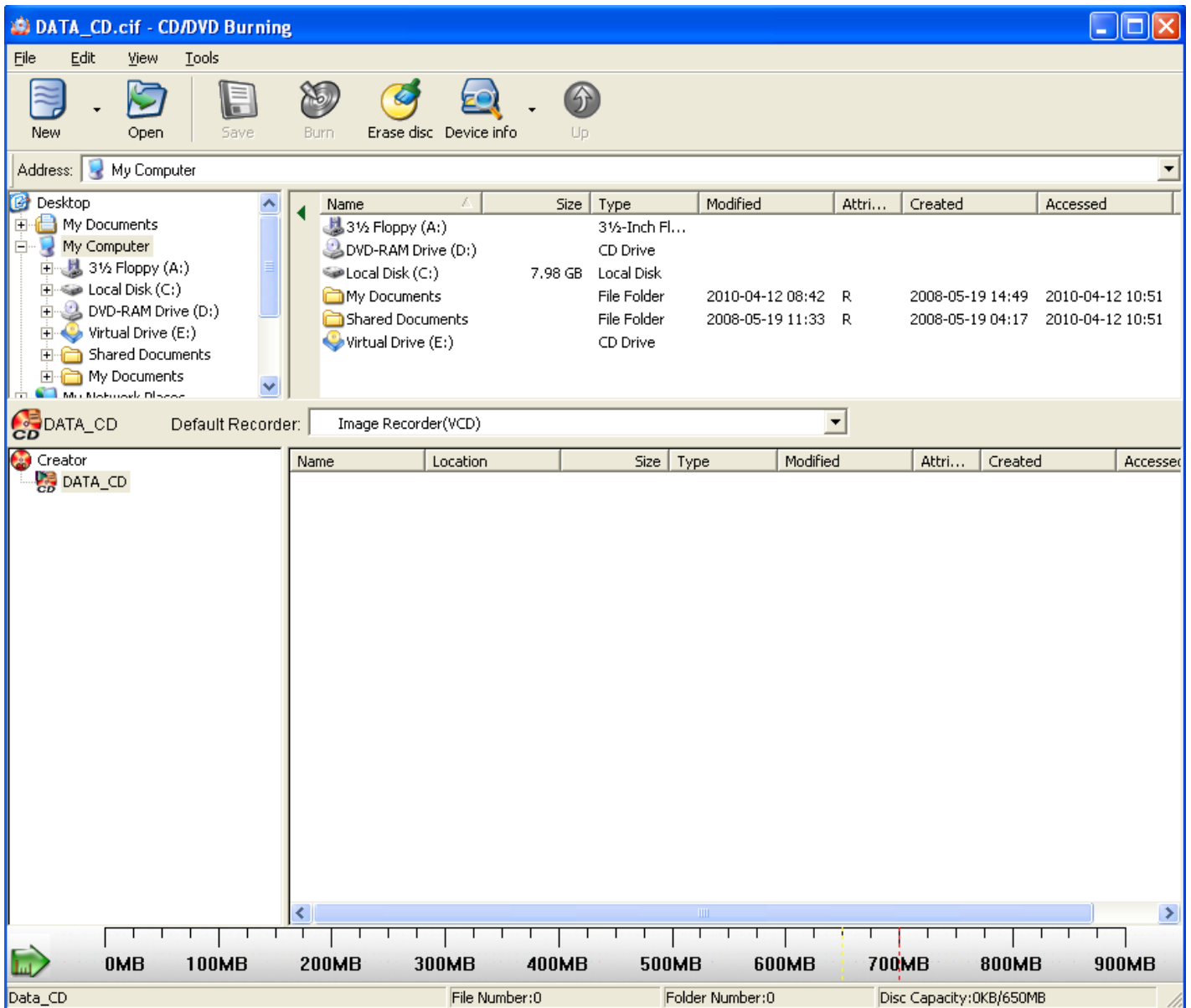
3.3.2 Building an Image from files or folders

You can burn a project of selected files to CD/DVD and BD or save it as a virtual CD (VirtualDrive Image file). Because disc types are created using the same method, we describe how to make them here.

3.3.2.1 Creating a CD/DVD/BD project

You can create various types of projects in the utility by clicking **New**. To start a new Data CD/DVD/BD project, select any of the following options from the CD/DVD/BD Burning Manager:

1. Click “**create virtual CD/DVD from files/folders**”. You may directly enter into the interface of the project.
2. **New → Data CD/Data DVD/data BD** or;
3. Click the small triangle to the right of the **New** button, then select **Data CD/Data DVD/data BD**, or;
4. Right-click in the Project Pane and select **New → Data CD/Data DVD/data BD**.



3.3.2.2 Adding Files and Folders to a Project

You can now add files and folders to your project using any of the following methods:

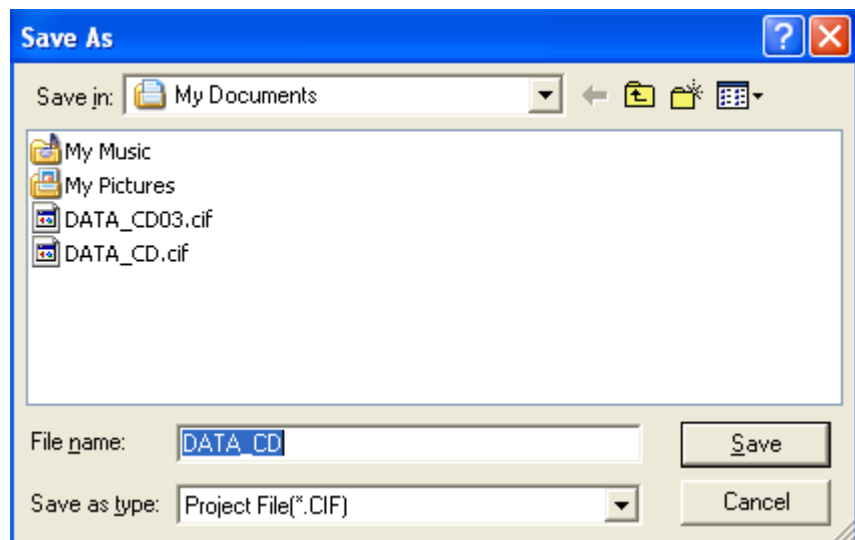
- Drag files and folders from the Source Pane or from Windows Explorer to the Current Project Pane.(windows 2000/XP available only)
- Copy and paste files and folders from the Source Pane or Windows Explorer to the Current Project Pane.
- Select files and folders from the Source Pane, right-click on the selected objects, and click **Add**.
- Select files and folders from the Source Pane and choose **Edit → Add to Project**.
- Select **Edit → Add File** to display the Open dialog box. You may then select your files and folders.
- Right-click the Destination Project (to which the file will be added) or a destination folder from the Project Pane and choose **Add File**. This will display the Open dialog box, where you can select your files and folders.

- Right-click on any blank area of the Current Project Pane and select **Add File** to display the Open dialog box. Select your files and folders.

3.3.2.3 Save the created files to be projects

If you prefer to save the files as projects anywhere on your computer when the image is complete, you can do the following:

1. Click **Save** button or Right-click in the Project Pane and select **Save**.
2. A box pops up in which you can choose the location where the project is saved and set a name for it.



4. Click **Save**

Note


As you add files to your project, you can preview documents, photos, videos, and audio files by double-clicking on their icons in the Source Pane.

You can also view the contents of a folder by right-clicking on the folder and selecting **Open**.



Note

The horizontal scale bar at the bottom of the Project Pane displays the total size of the project. The default scale is set automatically according to the project type you are creating. You can change the scale by

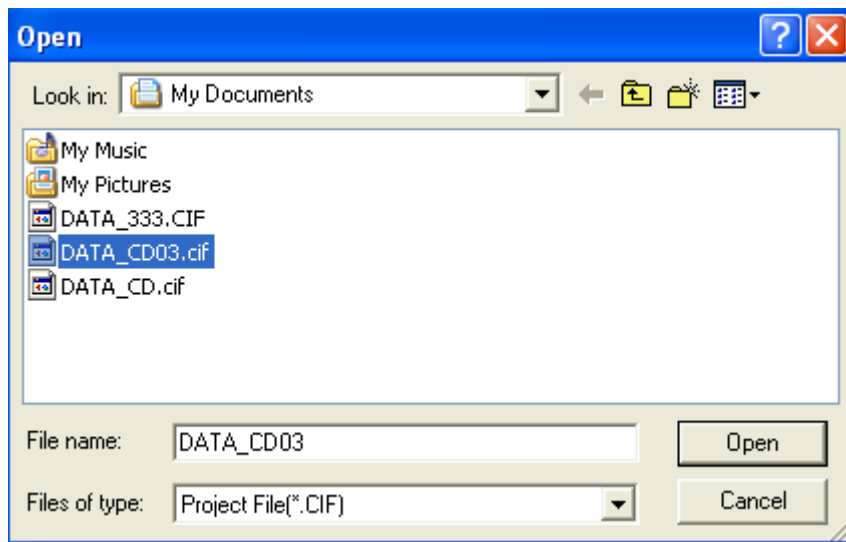
clicking the  icon in the left corner of the toolbar.

3.3.3 Creating an image from project

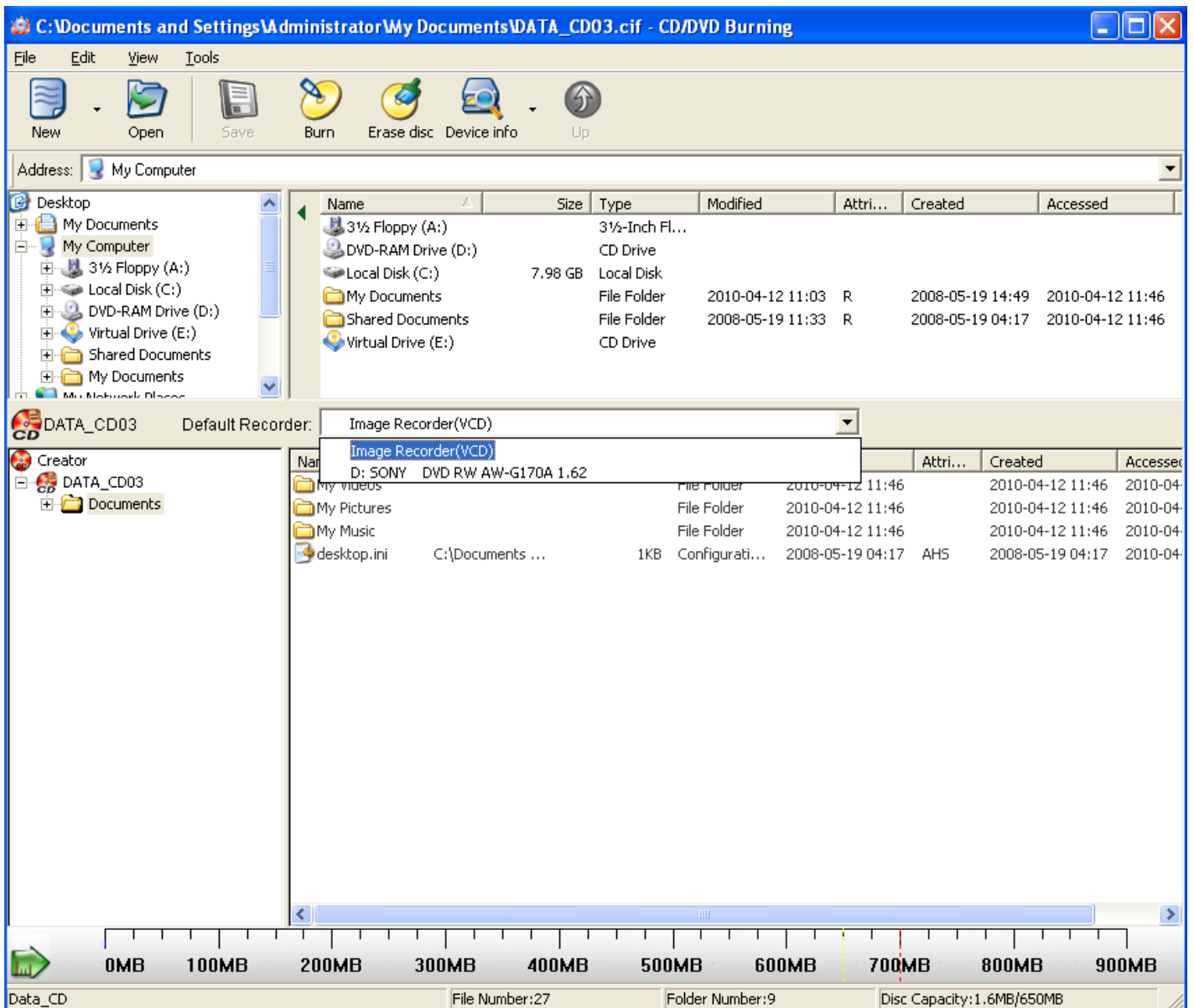
Whether do you have previously created a project or it is your first time to create, the feature can help you customize

the project by following these steps:

1. Choose a project which you previously created or create a project now (details refer to [3.3.2.2](#)).
2. Select the project you want to customize.



3. Click “**open**”. Customize the files or folders.
4. Right click in the project pane, you can add, delete and rename the files to customize the virtual CD.
5. After customization is complete, choose the default location. There are two conditions for you to choose which are:



a. If you prefer to burn the project to an actual CD, you can choose the name of your drive.

b. If you prefer to burn it as an image to a location on your computer, choose “image recorder (VCD)”.

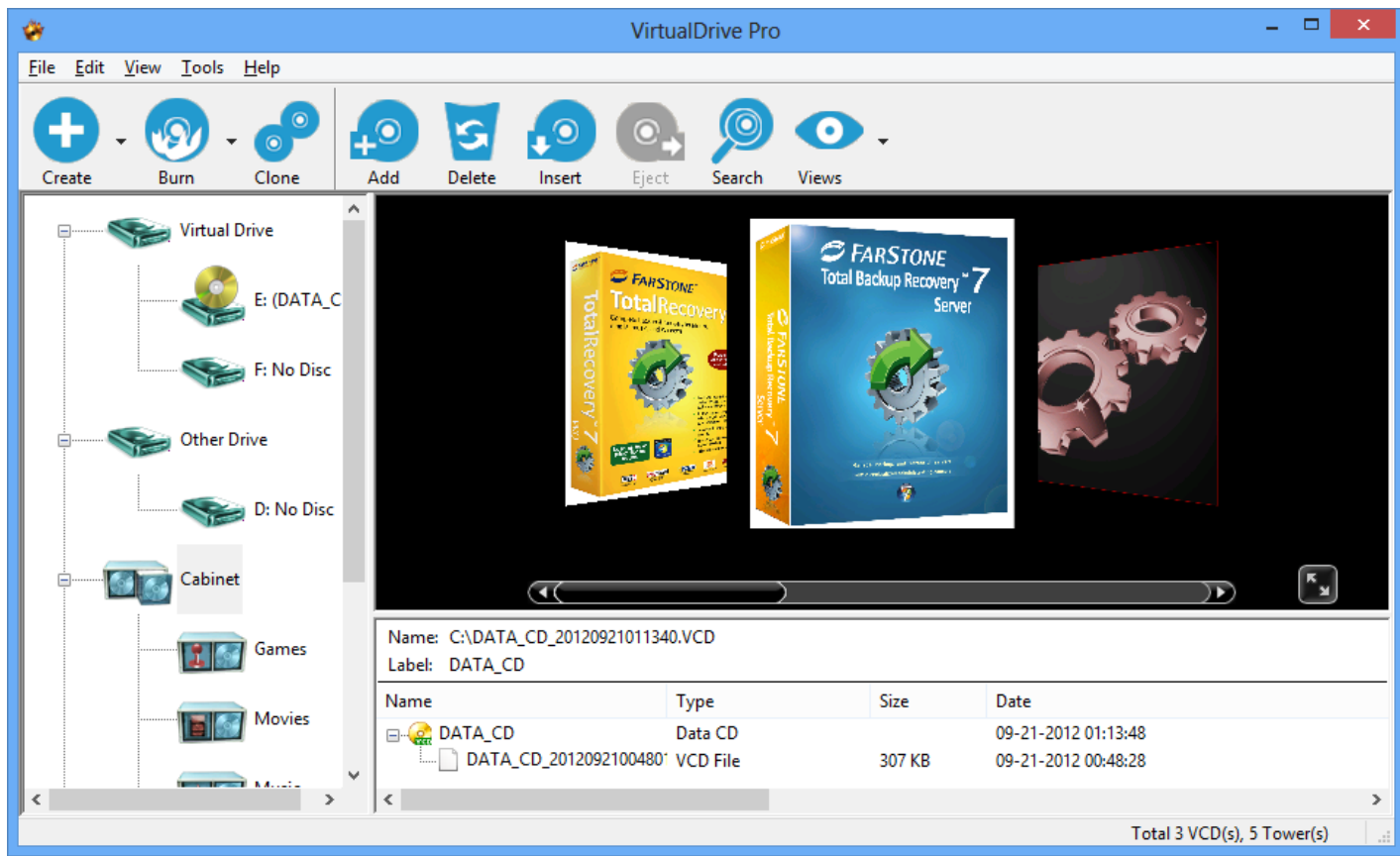
6. Click “**burn**” to begin building the image.

3.3.4 Custom virtual CD

After creating the image, you may customize CD covers by adding or editing the pictures, the way you want it. The utility enables you to easily find the virtual CD you want to access.

1. Select virtual CD that you will customize in the cabinet.
2. Click the small triangle to the right of the **views** button, then click **Cover view**.
3. Right click the virtual CD that you plan to edit, select **Edit CD/DVD artwork**.
4. Select the covers from your specified location.

5. Click **Open**.




Tip

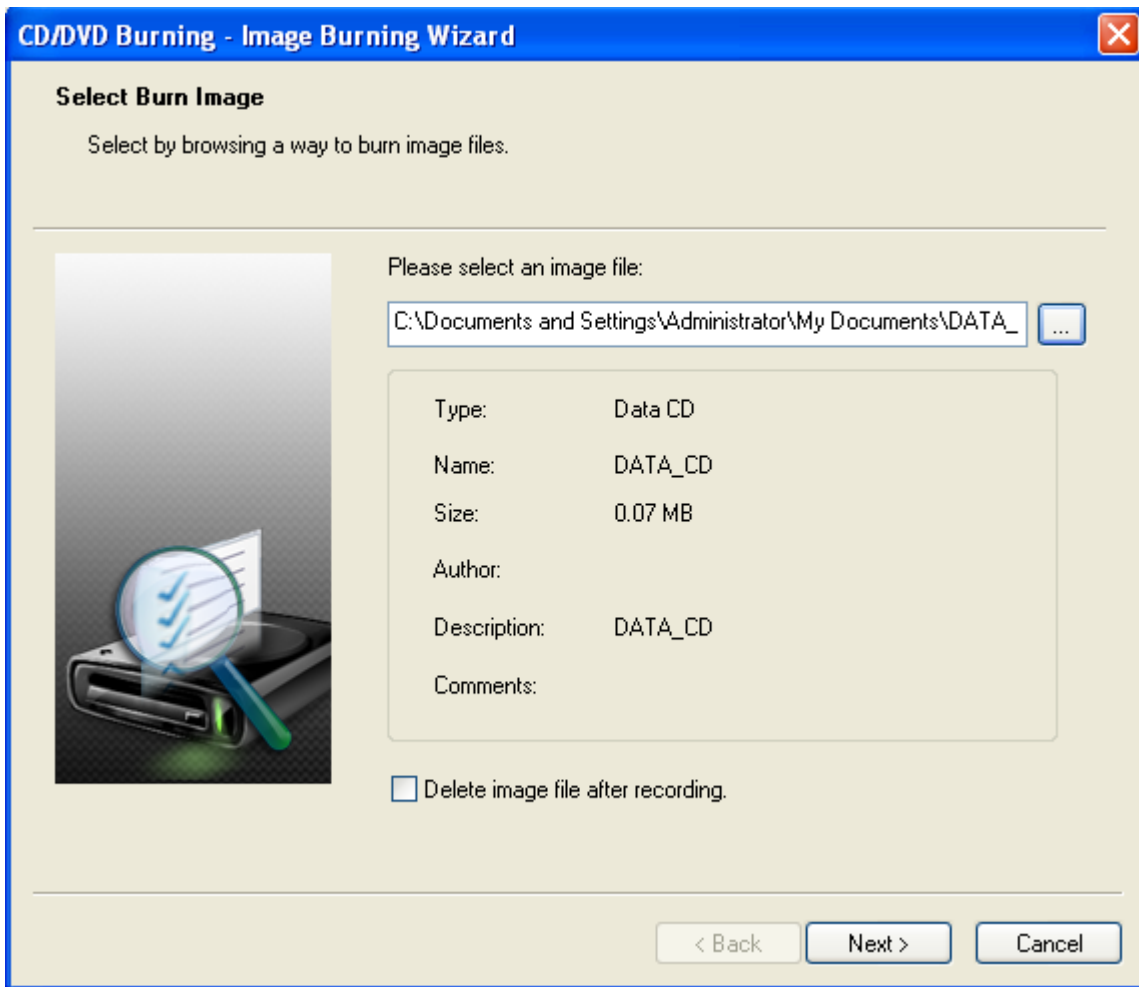
The edited covers can help to differentiate the virtual CDs from one another.

3.4 Burn image

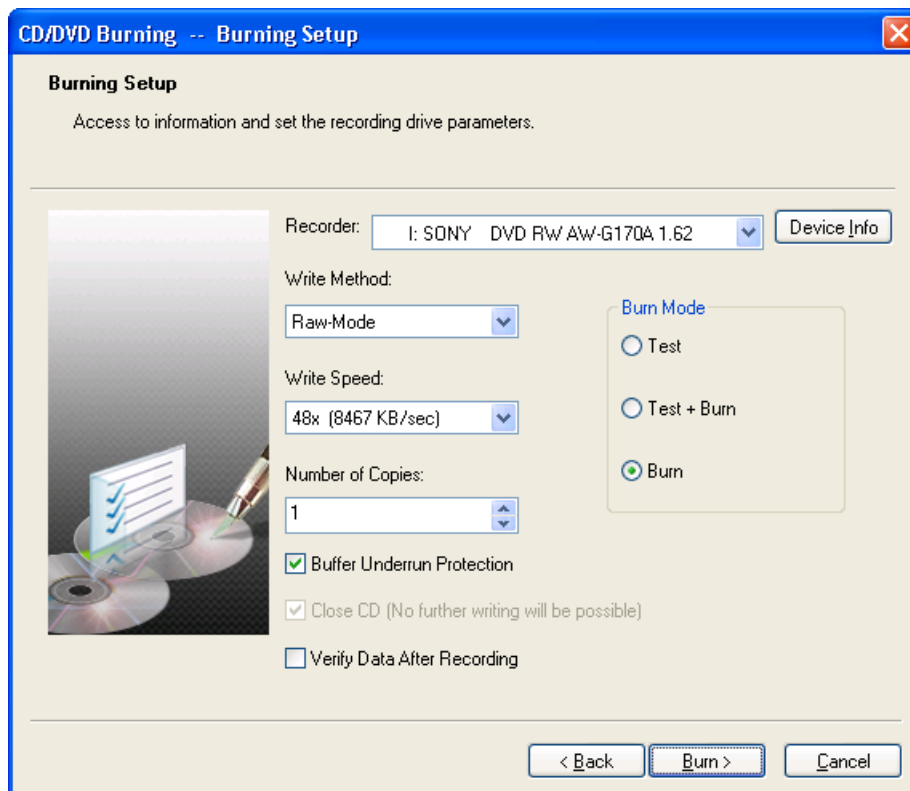
3.4.1 Burn CD/DVD

Create a CD/DVD which can protect all types of files and folders and is available in all supported windows systems.

1. Insert a recordable Disc into a rewritable drive.
2. Click **Burn** in the upside of the interface and select **Burn CD/DVD from virtual CD**.
3. Click the browse button  to select an Image file you want to burn and click **Next**.



4. Entering the burning setup of the new Image in the description box, you can choose the following option to customize it.



Device information: you may find details about your drive

Buffer underrun protection : When system resource is not enough, the feature can protect the CD that is recording and prevent burning failure.

“Close CD” : the CD you record will stop adding data

Verify data: make sure the data on the CD is correct

Number of copies: you can choose the number of copies to make based on your demand

5. Click **Burn** to begin building the Image on actual CD.

3.4.2 Burn custom disc

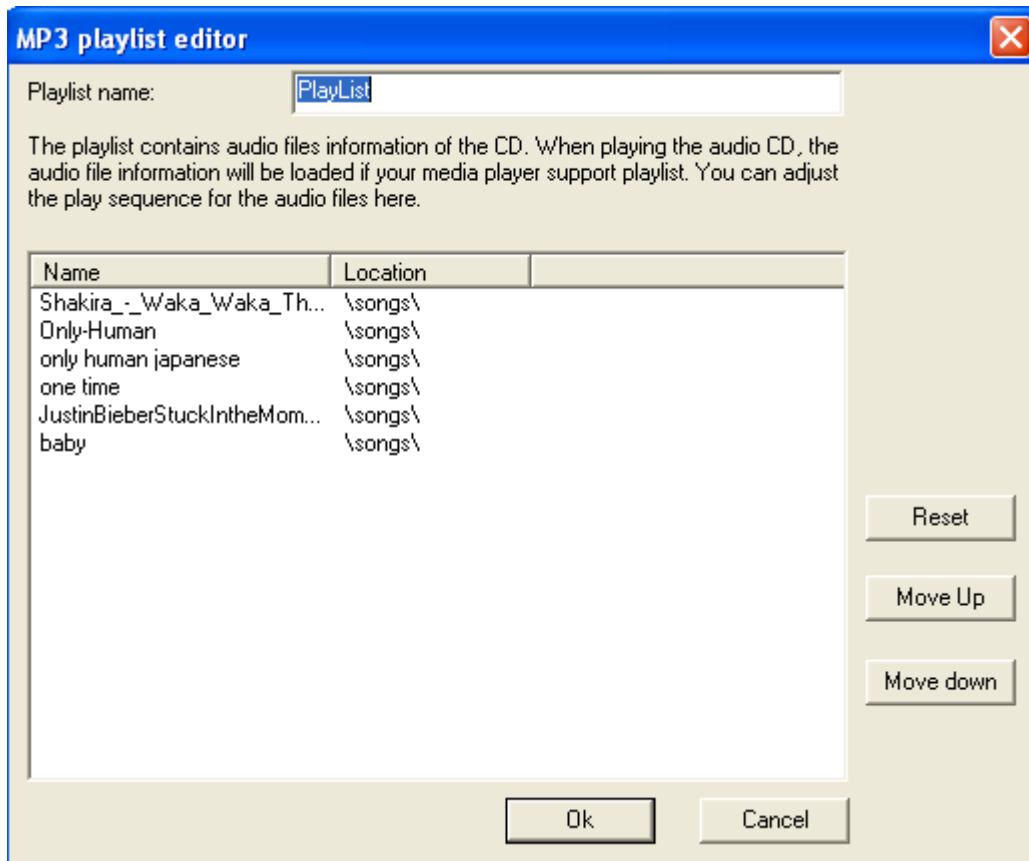
You can create a CD/DVD in which you can customize the type of files or folders based on your preference and which files and folders are available in all windows systems

1. Click **“burn custom disc”**.
2. Select Files and Folders you prefer to add to the Project (details refer to [3.3.2.2](#))
3. Right click in the project pane. You may add, delete and rename the files to customize the virtual CD.
4. After customization is complete, choose the default location. There are two options for you to choose:
 - a. If you would like to directly burn the project to an actual CD, you can choose the name of your hard drive
 - b. If you would like to burn the project as an image to a preferred location on the computer, choose **“image recorder (VCD)”**.
5. Click **“burn”** to begin building the image.

3.4.3 Burn MP3 disc

Burn all your collective MP3 files onto a CD/DVD. The CD/DVD can be played on any computer or player that supports MP3. It can store more music files than a typical CD.

1. Choose MP3 files or folders and add them to the project.
2. Click “**PlayList**”,
3. Enter the playlist editor box. In this box, you can change the name of the image and adjust the turn of songs by moving them up or down.



4. You can save them as a project to the location you want or burn them directly onto the CD. (Details refer to [3.4.5](#))
5. Click “**Burn**” to begin building image.

3.4.4 Burn audio disc

Create a standard music CD which can be played on any audio player. When creating, you can select any music from your hard drive.

1. Select audio files or folders and add them to the project. The program will automatically determine which files are audio files.
2. You can save them as the project to the location where you want or burn them directly into the CD. (Details refer to 3.5.3)
3. Click “**burn**” to begin building image.

Tip

If you burn the **WAVE** files to audios, it is recommended to use files of WAV Digitization Quality, 44.1 K, 16-bit sound depth (bit rate=705 kbps).

3.4.5 Burn image from project

1. Click **burn image** → **burn image from project** or Click the small triangle to the right of the **burn image** button, then select **burn image from project**.
2. A pop up box will appear. Choose which project to burn.
3. Before burning, there are two default recorders for you to choose:

If you would like to directly burn the project to an actual CD, set the default recorder to be hard drive.

- a. Insert a recordable CD into the hard drive.
- b. Click the **Burn** button in the optional menu.
- c. The burning setup box pops up and you can custom it by following options.

Device information: you may find details about your drive

Buffer underrun protection : When system resource is not enough, the feature can protect the CD that is recording and prevent burning failure.

“Close CD”: the CD you record will stop adding data.

Verify data: make sure the data on CD is correct.

Number of copies: you can choose the number of copies to make based on your demand.

- d. Click **burn**

If you would like to burn it as an image to a preferred location on the computer, choose “image recorder (VCD)” as the default recorder.

- a. Click **“Burn”**
- b. Enter a description of the new Image in the description box. Click the browse button to set an image name for your VCD file and save it to the default location C:
- c. A dialog box will display the attributes of the Image that will be created.
- d. Click **Next**.
- e. Enter the option box.

Description: define the file type

Author: Enter the name of the CD’s publisher or author (i.e., FarStone Technology).

Comments: The comments are the descriptions of the image.

(Optional) You can set a password for Image files. The password will be required if you attempt to insert the Image or view the content of the Image.

(Optional) If the CD does not have an Auto-run file, you can specify a program to run it when the Image is inserted.

Using data compression will save hard drive space but will also require more time to build the Image.

- f. Click **“Burn”** to begin building image.

3.5 Cloning CD/DVD or BD

You can make an identical copy of an existing CD/DVD/BD onto another recordable disc.

In the Main Console, select **Clone CD/DVD/Blue-ray**. The way you clone your disc will depend on the number of CD/DVD/BD drives connected to your computer.

Cloning a Disc with Two CD/DVD or BD Drives

Insert a blank disc into one CD/DVD/BD recorder, and then insert the source disc into your other CD/DVD/BD-ROM drive.

From the drop-down menu in the dialog box, select the drive containing the source disc.

Other options in this dialog box include:

- **Disc Information:** View disc type, number of sectors, disc size, time, sessions, tracks, start sector, and end sector of the source disc.
- **Read Speed:** Select a read speed from the dropdown menu. It is recommended to choose the Best Speed option.
- **Ignore read errors:** Checking this box will set the burner to ignore read errors from the source disc.
- **On-the-fly:** Checking this option enables quick cloning.

Note

If the on-the-fly option is checked, data will be taken directly from the source disc and burned on the target disc.

If on-the-fly is not checked, data from the source disc will first be compressed as an Image and stored in a temporary files folder. The original contents of the source disc will then be burned to the target disc.

This option is not available if there is only one CD/DVD or BD drive in your computer.

Click **Next** to display a dialog box. Choose your burning settings and click **Burn**.

Cloning a Disc when there is only One CD/DVD Drive

1. Insert the source disc into your CD/DVD-ROM recorder.
2. Select the source disc from the drop-down menu in the dialog box.
3. Choose your burning settings and click **Record** in the dialog box.



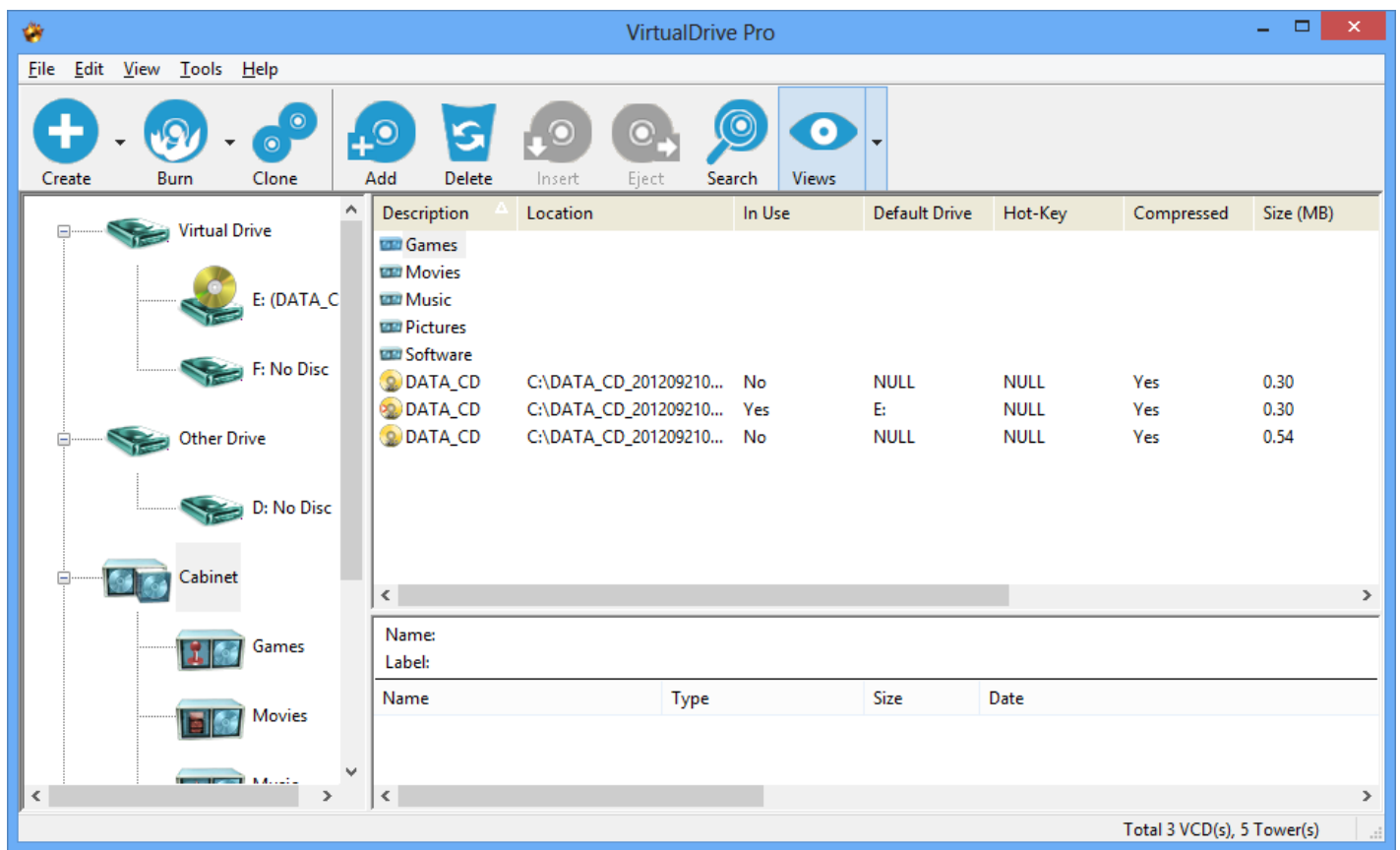
Note

The next two steps are settings for making an Image.

4. Select a CD/DVD read method. The default read method of “Intelligent Extraction” works with most CD formats. If you know what protection type is used on the CD, you may want to select the **Other Protected CD type** option.
 5. Using Data Compression will save hard disc space but will also require a longer build time.
 6. Enter a description for the Image in the description field.
- Optional:** If the CD does not have an Auto-run file, you can specify for a program to run it when the Image is inserted into a virtual drive.
7. Click **Next**. The image of the source disc will begin creating. When complete, the disc will automatically eject.
 8. Replace the source disc with a writable disc and click **OK** to continue.

3.6 The VCD Manager

To launch the VCD Manager, click the **VCD Manager** tab in the upper left-hand corner of the software interface.



The left window will display a directory tree of:

- All CD/DVD drives on your system, physical and virtual
- All VCD cabinets, in which you can organize your virtual CDs

Select a VCD to view its contents in the bottom window. Right click on a VCD to view its properties, password information, to rename a VCD, etc.

3.6.1 Using Virtual Drives in the VCD Manager

You can access your virtual drives in the left window of the VCD Manager. Right click on a Virtual Drive icon to view the following options:

- **Eject All:** From the top-level **Virtual Drives** icon, you can eject all VCDs from all your virtual drives.
- **Eject:** Eject an inserted VCD from the selected virtual drive.
- **Browse:** View the contents of an inserted VCD.
- **Autorun:** Play an inserted VCD automatically from the selected virtual drive.
- **Edit Drive:** Change the drive letter of the selected virtual drive.

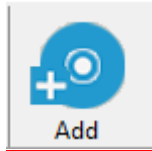
3.6.2 Using Physical Drives in the VCD Manager

You can access your physical CD/DVD-ROM drives in the left window of the VCD Manager. Right-clicking on a CD/DVD-ROM drive will present you with the following options.

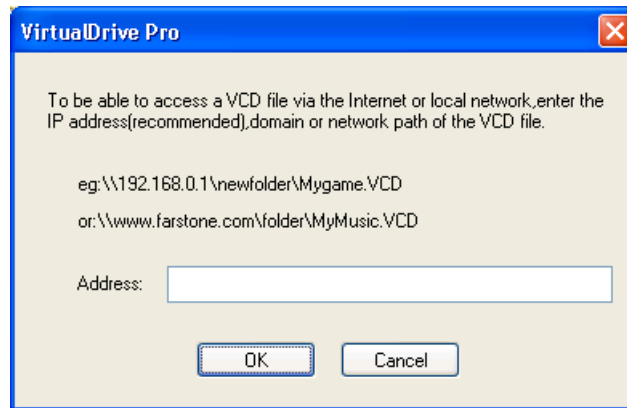
- **Eject All:** From the top-level **Other Drives** icon, you can eject all physical discs from all your CD/DVD-ROM drives.
- **Eject:** Eject a CD or DVD from a select CD/DVD-ROM drive.
- **Close:** Close a select CD/DVD-ROM drive.
- **Autorun:** Play an inserted CD/DVD automatically from the selected CD/DVD-ROM drive.
- **Edit Drive:** Change the drive letter of a select CD/DVD-ROM drive.
- **Build:** Enter the Create Virtual CD interface.

3.6.3 Adding VCDs to the VCD Manager

Before you play a VCD, you must first add it to the VCD Manager.



1. Click the **Add VCD** button to import a VCD from your hard drive, another computer, or from a local network; or
2. Right click in the upper right window of the VCD Manager. Select **Add** to open the **Add VCD** dialog box and browse for an image; or
3. Click **Add Internet image** in the **File** drop-down list to open the dialog box.



Type in or paste in the URL of the image. You must first make sure the VCD is a shared file.

3.6.4 Organizing VCDs in Cabinets

A cabinet is similar to a folder in Windows Explorer and stores multiple images by category. As your library grows, organizing your images in cabinets will reduce the time it takes to locate your VCDs.

VirtualDrive Pro creates several default cabinets: **Music**, **Games**, **Software**, **Photos**, **Movies**, and **Recently Used**.

To add a new cabinet category:

- Select any cabinet icon in the left window of the VCD Manager. Click **New cabinet** in the **File** drop-down list.

Or:

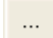
- Right click on any cabinet icon in the left window of the VCD Manager and select **New Cabinet** to open the New Cabinet window. You may rename or delete your cabinet by right-clicking the icon.

You can create a new cabinet within a sub-cabinet. To add a VCD to a cabinet, please refer to the methods described in the preceding section.

You can delete a cabinet by right clicking on it and selecting **Delete**, or selecting a cabinet and clicking the delete button at the bottom of the left window. Deleting a cabinet will remove all image icons and sub-cabinets. This will not

delete VCD files from their physical locations

3.6.5 Searching for VCDs

1. Click the **Search** button to open the **Search VCD** dialog box.
2. In the **Path** field, specify a drive to search. To select a custom path, click the **Browse** button  and click **Search**.
3. Located files will be displayed in the bottom right window.

3.6.6 Extracting Files from a VCD

In the VCD Manager, you can click on a VCD icon to view its contents in the bottom right window. In the bottom right window, right click on the file you wish to extract.

3.6.7 Inserting a VCD into a Virtual Drive

In the VCD Manager:

1. Select a VCD icon in the upper right window and drag it to an available virtual drive; or
2. Double click a VCD icon in the upper right window. This will insert your VCD into the default virtual drive, or the first available virtual drive; or
3. Select a VCD icon in the upper right window and click the **Insert** button; or
4. Open Windows Explorer, right click on a virtual drive, and choose **Insert** from the popup menu.
5. Open the VCD Manager, right click on a virtual CD, and select **Shortcut** to create a desktop shortcut. Double-click the desktop shortcut to insert the virtual CD into the first Virtual Drive listed.

3.6.8 Ejecting a VCD from a Virtual Drive

In the VCD Manager:

1. Click the **Eject** button on the menu bar. From the dropdown menu, select the VCD you wish to eject; or
2. In the left window, right click on a loaded virtual drive and select **Eject**; or
3. Open Windows Explorer, right click on a loaded virtual drive and select **Eject** from the popup menu.

3.6.9 Importing and Exporting a VCD List

To export a VCD list:

1. From the menu bar, select **File** → **Export VCD List**.
2. Select a location to save the VCD list and enter a name for it. Click **Save**.

Importing a VCD List

1. From the top menu bar, select **File** → **Import VCD List**.
2. Browse to select any saved VCD list you wish to import. Click **Open**.

3.7 Converting VCDs and ISO 9660 Images

You can convert an ISO 9660 image file into a VCD file, or conversely convert a VCD file into an ISO 9660 CD file.

1. From the top menu bar, select **Tools** → **Convert VCD/ISO**.
2. Click **Browse** to locate the ISO or VCD file.
3. Select the VCD or ISO 9660 image you would like to convert and click **OK**.
4. Click **Convert** to start the conversion process.



Note

Audio, DVD, and compressed VCD files cannot be converted into ISO files.

Chapter 4: Technical Support and Product Updates

Should you encounter a technical issue with our products, please contact your vendor or use the FarStone online support system at www.farstone.com/support.

Answers to frequently asked questions (FAQs) about FarStone products are posted on the corporate web site at www.farstone.com/support/faqs.

Glossary

Blu-ray disc: The optical disc storage is for storing high-definition video, PlayStation 3 video games, and other data, with up to 25 GB per single-layered, and 50 GB per dual-layered disc. 200 GB discs are available, and 100 GB discs are readable without extra equipment or modified firmware.

CD Emulator: A program that imitates a physical CD-ROM device, creating MP3-like files out of game, application, and data discs.

CD Extra: A multi-session disc containing both music tracks and computer data.

CD-ROM: A disc format that holds text, graphics, and hi-fidelity stereo sound. It uses a different format for recording data than the audio CD (CD-DA) from which it evolved. An audio CD player cannot play CD-ROMs, but CD-ROM players can play audio discs.

CD-Text: There is extra information added to a disc, like CD-Text for audio discs. It is stored in the disc subchannel.

Data CD/DVD: A CD/ DVD containing all types of files, including data files and audio files.

ISO 9660: A file system standard for discs which can be read on all operating systems. ISO9660 supports file names in 8.3 formats (8 characters for the file name and 3 characters for the file extension).

Mixed-Mode CD: A single-session CD containing both computer data and music tracks. It is typically used for entertainment and educational programs.

Multi-session CD: A CD containing several sessions with a 30MB space between two successive sessions. Each session has a table of contents linking to the next free area of the disc until the final track is closed. If a CD-R/CD-RW disc is left unclosed, you can append data to it.

Virtual CD/DVD: An image file created from the digital contents of a physical CD or DVD. A virtual CD runs directly on a computer's hard drive, but must be inserted into a virtual drive created by your CD emulation software.

Virtual Drive: A CD emulation device that emulates the functionality of a CD/DVD-ROM drive, and appears as a drive letter in Windows Explorer.